

Just Hoods[®]

ALWD is



NEW
STYLE

JHA004
Electric
Yellow

JHA004
Electric
Orange

THE HOME OF THE HOODIE

The hoodie is a key clothing item for any urbanite’s wardrobe, and for 13 years **JustHoods®** have supplied streetwear start-ups, sports teams and musicians with top-quality, contemporary designs in the largest variety of colors available.

We stick to what we do best, and we’re only getting better at it.

Contents

JHA001	College Hoodie	4	JHA016	Girlie Cropped Hoodie	17
JHY001	Youths College Hoodie	6	JHA017	Surf Hoodie	18
JHA003	Varsity Contrast Hoodie	8	JHA030	College Sweat	19
JHA009	Baseball Hoodie	9	JHY043	Youths Letterman Jacket	20
JHA004	Electric Hoodie NEW STYLE	10	JHA042	Urban Letterman Jacket	21
JHY004	Youths Electric Hoodie NEW STYLE	13	JHA043	Letterman Jacket	22
JHA011	Epic Print Hoodie	14	JHA050	College Zoodie	24
JHA014	Camo Hoodie	15	JHA074	Tapered Track Pant	25
JHA021	Cross Neck Hoodie	16		Color & Size Guides	26



JHA001

College Hoodie

S-5XL*

*All colors available in S-3XL – available in 5XL on selected colors

- Key Features**
- 37 great colors
 - Twin needle stitch detailing
 - Double fabric hood
 - Self-colored drawcords
 - Ribbed cuffs and hem
 - Soft cotton faced fabric creates ideal printing surface

- Specification**
- 80% Ringspun Cotton
 - 20% Polyester

- Weight**
- 8.3 oz/280 gsm
 - Midweight fabric

- Case Quantity**
- 24
- Youths sizes **pg.06**

	PFD (PREPARED FOR DYE)		ARCTIC WHITE		ASH
	5XL HEATHER GREY		STEEL GREY		5XL CHARCOAL
	BLACK SMOKE		5XL JET BLACK		BABY PINK
	HOT PINK		MAGENTA MAGIC		PURPLE
	5XL BURGUNDY		5XL FIRE RED		RED HOT CHILLI
	SUNSET ORANGE		BURNT ORANGE		ORANGE CRUSH
	GOLD		SUN YELLOW		VANILLA MILKSHAKE
	NUDE		DESERT SAND		HOT CHOCOLATE
	LIME GREEN		KELLY GREEN		OLIVE GREEN
	BOTTLE GREEN		PEPPERMINT		JADE
	SKY BLUE		HAWAIIAN BLUE		SAPPHIRE BLUE
	5XL ROYAL BLUE		AIRFORCE BLUE		5XL OXFORD NAVY
	5XL FRENCH NAVY				



JHY001

Youths College Hoodie XS–XL

Key Features

- Twin needle stitch detailing
- Double fabric hood
- No drawcords to comply with EU regulation
- Ribbed cuffs and hem
- Soft cotton faced fabric creates ideal printing surface
- Simple tear out label makes it perfect for rebranding

Specification

- 80% Ringspun Cotton
- 20% Polyester

Weight

- 8.3 oz/280 gsm
- Midweight fabric

Case Quantity

- 24
- Adults sizes **pg.04**





Heather Grey
Fire Red

	HEATHER GREY FRENCH NAVY		HEATHER GREY FIRE RED
	CHARCOAL ORANGE CRUSH		JET BLACK HEATHER GREY
	JET BLACK HOT PINK		JET BLACK FIRE RED
	JET BLACK ORANGE CRUSH		JET BLACK GOLD
	HOT PINK FRENCH NAVY		PURPLE HEATHER GREY
	PURPLE SUN YELLOW		BURGUNDY CHARCOAL
	BURGUNDY GOLD		FIRE RED ARCTIC WHITE
	FIRE RED JET BLACK		KELLY GREEN ARCTIC WHITE
	SKY BLUE ARCTIC WHITE		SAPPHIRE BLUE HEATHER GREY
	SAPPHIRE BLUE ORANGE CRUSH		ROYAL BLUE ARCTIC WHITE
	OXFORD NAVY SUN YELLOW		FRENCH NAVY HEATHER GREY
	FRENCH NAVY FIRE RED		FRENCH NAVY SKY BLUE



Jet Black
Fire Red

JHA009

Baseball Hoodie

S-3XL

Key Features

- Twin needle stitch detailing
- Contrast double fabric hood
- Contrast raglan sleeves
- Contrast flat lace drawcords
- Kangaroo pouch pocket with small hidden opening for ear phone cord feed
- Ribbed cuffs and hem
- Hidden earphone loops
- Soft cotton faced fabric creates ideal printing surface
- Simple tear out label makes it perfect for rebranding

Specification

- 80% Ringspun Cotton
- 20% Polyester

Weight

- 8.3 oz/280 gsm
- Midweight fabric

Case Quantity

- 24

	HEATHER GREY JET BLACK
	CHARCOAL JET BLACK
	JET BLACK FIRE RED

JHA003

Varsity Contrast Hoodie

S-3XL

Key Features

- Twin needle stitch detailing
- Double fabric hood with contrast inner
- Contrast flat lace drawcords
- Ribbed cuffs and hem
- Hidden earphone loops
- Soft cotton faced fabric creates ideal printing surface
- Simple tear out label makes it perfect for rebranding

Specification

- 80% Ringspun Cotton
- 20% Polyester

Weight

- 8.3 oz/280 gsm
- Midweight fabric

Case Quantity

- 24

JHA004

Electric Hoodie

S-3XL

Key Features

- Vibrant eye-catching colors
 - Flat lace drawcords
 - Kangaroo pouch pocket
 - Brushed inner fleece
- Twin needle stitching detail
 - Ribbed cuffs and hem
- Simple tear out label makes it perfect for rebranding

Specification

- 80% Polyester
- 20% Ringspun Cotton

Weight

- 8.3 oz/280 gsm
- Midweight fabric

Case Quantity

- 24

- Youths sizes **pg.12**





NEW
STYLE

Electric
Orange

JHY004

Youths

Electric Hoodie

XS–XL

Key Features

- Vibrant eye-catching colors
- No drawcords to comply EU regulation
- Twin needle stitching detail
- Brushed inner fleece
- Kangaroo pouch pocket
- Ribbed cuffs and hem
- Simple tear out label makes it perfect for rebranding
- Double fabric hood

Specification

- 80% Polyester
- 20% Ringspun Cotton

Weight

- 8.3 oz/280 gsm
- Midweight fabric

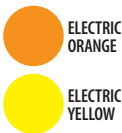
Case Quantity

- 24

- Adults sizes **pg.10**



Electric
Yellow



ELECTRIC
ORANGE

ELECTRIC
YELLOW



JHA011

Epic Print Hoodie

S–3XL

Key Features

- Twin needle stitching detail
- Two panel double fabric hood
- Flat lace drawcords
- No pocket for maximum print surface area
- Brushed inner fleece
- Ribbed cuffs and hem
- Soft cotton faced fabric creates ideal printing surface
- Simple tear out label makes it perfect for rebranding

Specification

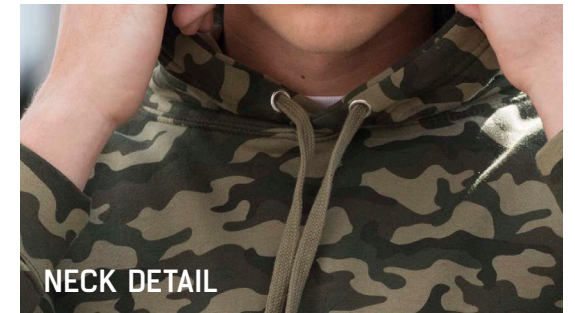
- 80% Ringspun Cotton
- 20% Polyester

Weight

- 8.3 oz/280 gsm
- Midweight fabric

Case Quantity

- 24



JHA014

Camo Hoodie

S–3XL

Key Features

- Twin needle stitching detail
- Classic all over camouflage print design
- Double fabric hood
- Kangaroo pouch pocket
- Flat lace drawcords
- Ribbed cuffs and hem
- Soft cotton faced fabric creates ideal printing surface
- Simple tear out label makes it perfect for rebranding

Specification

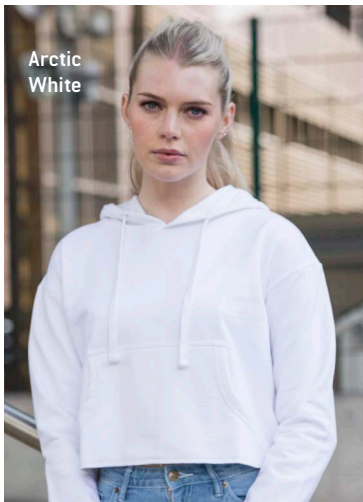
- 70% Ringspun Cotton
- 30% Polyester

Weight

- 8.3 oz/280 gsm
- Midweight fabric

Case Quantity

- 24



JHA016

Girlie Cropped Hoodie

XS–XL

Key Features

- Girlie relaxed fit
- Cropped cut with drop shoulder design
- Kangaroo pouch pocket
- Twin needle stitching detail
- Raw edge hem with cover stitching
- Brushed inner fleece
- Double fabric hood
- Flat lace drawcords
- Soft cotton faced fabric creates ideal printing surface
- Simple tear out label makes it perfect for rebranding

Specification

- 80% Ringspun Cotton
20% Polyester
- 75% Ringspun Cotton
25% Polyester
(Heather Grey)

Weight

- 8.3 oz/280 gsm
Midweight fabric

Case Quantity

- 24



JHA017

Surf Hoodie

S–3XL

Key Features

- Twin needle stitching detail
- Melange effect fabric
- Relaxed fit
- Double fabric hood
- Kangaroo pouch pocket
- Flat lace drawcords
- Ribbed cuffs and hem
- Soft cotton faced fabric creates ideal printing surface
- Simple tear out label makes it perfect for rebranding

Specification

- 80% Ringspun Cotton
20% Polyester

Weight

- 8.3 oz/280 gsm
Midweight fabric

Case Quantity

- 24



- HEATHER GREY
- JET BLACK
- OXFORD NAVY



NECK DETAIL

Oxford Navy



JHA021

Cross Neck Hoodie

S-3XL

Key Features

- Heavyweight Hoodie
- Cross over neck detail
- Twin needle stitch detailing
- Three panel double fabric hood
- Flat lace drawcords
- Kangaroo pouch pocket with small hidden opening for ear phone cord feed
- Ribbed cuffs and hem
- Hidden earphone loops
- Thumb holes in cuffs
- Soft cotton faced fabric creates ideal printing surface
- Simple tear out label makes it perfect for rebranding

Specification

- 70% Ringspun Cotton
- 30% Polyester

Weight

- 9.8 oz/330 gsm
- Heavyweight fabric

Case Quantity

- 24



Orange Crush

- | | | |
|------------------------|-------------------|---------------|
| PFD (PREPARED FOR DYE) | ARCTIC WHITE | ASH |
| 5XL HEATHER GREY | STEEL GREY | CHARCOAL |
| 5XL JET BLACK | BABY PINK | HOT PINK |
| MAGENTA MAGIC | PURPLE | BURGUNDY |
| FIRE RED | RED HOT CHILLI | SUNSET ORANGE |
| BURNT ORANGE | ORANGE CRUSH | GOLD |
| SUN YELLOW | VANILLA MILKSHAKE | NUDE |
| DESERT SAND | HOT CHOCOLATE | LIME GREEN |
| KELLY GREEN | OLIVE GREEN | BOTTLE GREEN |
| PEPPERMINT | JADE | SKY BLUE |
| HAWAIIAN BLUE | SAPPHIRE BLUE | ROYAL BLUE |
| AIRFORCE BLUE | 5XL OXFORD NAVY | FRENCH NAVY |

JHA030

College Sweat

S-5XL*

*All colors available in S-3XL – available in 5XL on selected colors

Key Features

- 36 great colors
- Crew neck sweat
- Set in sleeves
- Taped neck
- Stylish fit
- Soft cotton faced fabric creates ideal printing surface
- Ribbed collar, cuffs and hem
- Simple tear out label makes it perfect for rebranding

Specification

- 80% Ringspun Cotton
- 20% Polyester

Weight

- 8.3 oz/280 gsm
- Midweight fabric

Case Quantity

- 36



CHARCOAL
JET BLACK



JET BLACK
JET BLACK



Charcoal
Jet Black

JHA042

Urban Letterman Jacket

S–3XL

Key Features

- Knitted collar, cuffs and waistband with stripe details
- Faux Leather sleeves
- Press – stud closure
- Welt pockets with faux leather trim
- Hanging loop at back neck
- Taped back neck
- Contrasts studs
- Soft cotton faced fabric creates ideal printing surface
- Simple tear out label makes it perfect for rebranding

Specification

- 70% Ringspun Cotton
30% Polyester (Body)
- 100% PU Leather (Sleeves)

Weight

- 9.8oz/330 gsm (Body)
- 7.8oz (Sleeves)

Case Quantity

- 24

Royal Blue
Heather Grey



JHY043

Youths Letterman Jacket

XS–XL

Key Features

- Contrast sleeves
- Knitted collar, cuffs and waistband with stripe details
- Press – stud closure
- Contrast press studs
- Welt contrast pockets
- Taped back neck
- Hanging loop at back neck
- Soft cotton faced fabric creates ideal printing surface
- Simple tear out label makes it perfect for rebranding

Specification

- 70% Ringspun Cotton
30% Polyester
- 65% Ringspun Cotton
35% Polyester
(Heather Grey)

Weight

- 9.8 oz/330 gsm
Heavyweight fabric

Case Quantity

- 24

- Adults sizes [pg.22](#)



JET BLACK
WHITE



HOT PINK
HEATHER GREY



FIRE RED
HEATHER GREY



ROYAL BLUE
HEATHER GREY



OXFORD NAVY
HEATHER GREY



JHA043

Letterman Jacket

S-3XL

- Key Features**
- Contrast sleeves
 - Knitted collar, cuffs and waistband with stripe details
 - Press – stud closure
 - Contrast studs
 - Welt contrast pockets
 - Taped back neck
 - Hanging loop at back neck
 - Soft cotton faced fabric creates ideal printing surface
 - Simple tear out label makes it perfect for rebranding

- Specification**
- 70% Ringspun Cotton
30% Polyester
 - 65% Ringspun Cotton
35% Polyester (Heather Grey)
- Weight**
- 9.8 oz/330 gsm
Heavyweight fabric
- Case Quantity**
- 24
- Youths sizes **pg.20**



Fire Red

- HEATHER GREY
- CHARCOAL
- JET BLACK
- BURGUNDY
- FIRE RED
- ROYAL BLUE
- FRENCH NAVY

JHA050
College Zoodie
S-3XL

- Key Features**
- Full zip hoodie
 - Self-fabric covered main zip
 - Twin needle stitching detail
 - Double fabric hood
 - Self-colored cords
 - Kangaroo pouch pockets
 - Ribbed cuffs and hem
 - Soft cotton faced fabric creates ideal printing surface
 - Simple tear out label makes it perfect for rebranding

- Specification**
- 80% Ringspun Cotton
20% Polyester
- Weight**
- 8.3 oz/280 gsm
Midweight fabric
- Case Quantity**
- 24

JHA074
Tapered Track
Pant
S-3XL

- Key Features**
- Modern tapered slim fit
 - Ribbed cuffs
 - Front pockets
 - Elasticated waistband with outer drawcords
 - Brushed inner fleece
 - Simple tear out label makes it perfect for rebranding
 - Soft cotton faced fabric creates ideal printing surface
- Specification**
- 80% Ringspun Cotton
20% Polyester
 - 75% Ringspun Cotton
25% Polyester (Heather Grey)

- Weight**
- 8.3 oz/280 gsm
Midweight fabric

- Case Quantity**
- 24



Heather Grey

- HEATHER GREY
- JET BLACK

SIZE GUIDE & PMS GUIDE

US SIZE GUIDE

ADULT			YOUTHS			
SIZE	CHEST	WAIST	AGE	SIZE	CHEST	HEIGHT
S	37"-39"	76"-81"	3/4 YEARS	XS	28"-30"	37.5"-40"
M	40"-42"	81"-86"	5/6 YEARS	S	31"-32"	42.5"-44.5"
L	43"-45"	87"-91"	7/8 YEARS	M	33"-34"	47"-49.5"
XL	46"-48"	91"-96"	9/11 YEARS	L	35"-36"	52"-56.5"
XXL	49"-51"	96"-101"	12/13 YEARS	XL	37"-38"	59"-61"
3XL	52"-54"	101"-106"				
4XL	55"-57"	106"-111"				
5XL	58"-60"	111"-116"				

PMS GUIDE

							
FRENCH NAVY PMS 5395C	OXFORD NAVY PMS 533C	AIRFORCE BLUE PMS 5405C	ROYAL BLUE PMS 661C	SAPPHIRE BLUE PMS 300C	HAWAIIAN BLUE PMS 2995C	SKY BLUE PMS 644C	JADE PMS 329C
							
PEPPERMINT PMS 3242C	BOTTLE GREEN PMS 554C	OLIVE GREEN PMS 448C	KELLY GREEN PMS 347C	LIME GREEN PMS 15-0146TCX	HOT CHOCOLATE PMS 440C	DESERT SAND PMS 7502C	NUDE PMS 4665C
							
VANILLA MILKSHAKE PMS 7499C	SUN YELLOW PMS 109C	GOLD PMS 136C	ORANGE CRUSH PMS 1505C	BURNT ORANGE PMS 173C	SUNSET ORANGE PMS 179C	RED HOT CHILLI PMS 1945C	FIRE RED PMS 200C
							
BURGUNDY PMS 7421C	PURPLE PMS 2617C	MAGENTA MAGIC PMS 258C	HOT PINK PMS 214C	BABY PINK PMS 1895C	JET BLACK PMS BLACK	BLACK SMOKE PMS 19-3902TCX	CHARCOAL PMS 18-5210TCX
							
STEEL GREY PMS 425C	HEATHER GREY PMS COOL GRAY 5C	ASH PMS COOL GRAY 2 UP	ARCTIC WHITE PMS WHITE	PFD (PREPARED FOR DYE) 11-4202 TCX			

COLOR GUIDES

	FRENCH NAVY	OXFORD NAVY	AIRFORCE BLUE	ROYAL BLUE	SAPPHIRE BLUE	HAWAIIAN BLUE	SKY BLUE	JADE	PEPPERMINT	BOTTLE GREEN	OLIVE GREEN	KELLY GREEN	LIME GREEN	HOT CHOCOLATE	DESERT SAND	NUDE	VANILLA MILKSHAKE	SUN YELLOW	GOLD	ORANGE CRUSH	BURNT ORANGE	SUNSET ORANGE	RED HOT CHILLI	FIRE RED	BURGUNDY	PURPLE	MAGENTA MAGIC	HOT PINK	BABY PINK	JET BLACK	BLACK SMOKE	CHARCOAL	STEEL GREY	HEATHER GREY	ASH	ARCTIC WHITE	PPD (PREPARED FOR DYE)
JHA001 COLLEGE HOODIE	●	●	●	●	●	●	●	●	●	●	●	●	●	●	●	●	●	●	●	●	●	●	●	●	●	●	●	●	●	●	●	●	●	●	●	●	○
JHY001 YOUTHS COLLEGE HOODIE	●			●																				●		●			●		●		●				
JHA011 EPIC PRINT HOODIE																																					
JHA016 GIRLIE CROPPED HOODIE																																					
JHA021 CROSS NECK HOODIE		●																																			
JHA030 COLLEGE SWEAT	●	●	●	●	●	●	●	●	●	●	●	●	●	●	●	●	●	●	●	●	●	●	●	●	●	●	●	●	●	●	●	●	●	●	●	○	
JHA050 COLLEGE ZOODIE	●			●																				●	●												
JHA074 TAPERED TRACK PANT																														●							



JHA003 VARSITY HOODIE

										
BURGUNDY CHARCOAL	BURGUNDY GOLD	CHARCOAL ORANGE CRUSH	FIRE RED ARCTIC WHITE	FIRE RED JET BLACK	FRENCH NAVY FIRE RED	FRENCH NAVY HEATHER GREY	FRENCH NAVY SKY BLUE	SURF BLUE	SURF OCEAN	SURF PINK
										
HEATHER GREY FIRE RED	HEATHER GREY FRENCH NAVY	HOT PINK FRENCH NAVY	JET BLACK FIRE RED	JET BLACK GOLD	JET BLACK HEATHER GREY	JET BLACK HOT PINK	JET BLACK ORANGE CRUSH	SURF PURPLE	SURF YELLOW	
										
KELLY GREEN ARCTIC WHITE	OXFORD NAVY SUN YELLOW	SAPPHIRE BLUE HEATHER GREY	SAPPHIRE BLUE ORANGE CRUSH	PURPLE HEATHER GREY	PURPLE SUN YELLOW	ROYAL BLUE ARCTIC WHITE	SKY BLUE ARCTIC WHITE			

JHA009 BASEBALL HOODIE

		
CHARCOAL JET BLACK	HEATHER GREY JET BLACK	JET BLACK FIRE RED



JHA004 ELECTRIC HOODIE / JHY004 YOUTHS ELECTRIC HOODIE

	
ELECTRIC ORANGE	ELECTRIC YELLOW

JHA043 LETTERMAN JACKET / JHY043 YOUTHS LETTERMAN JACKET*

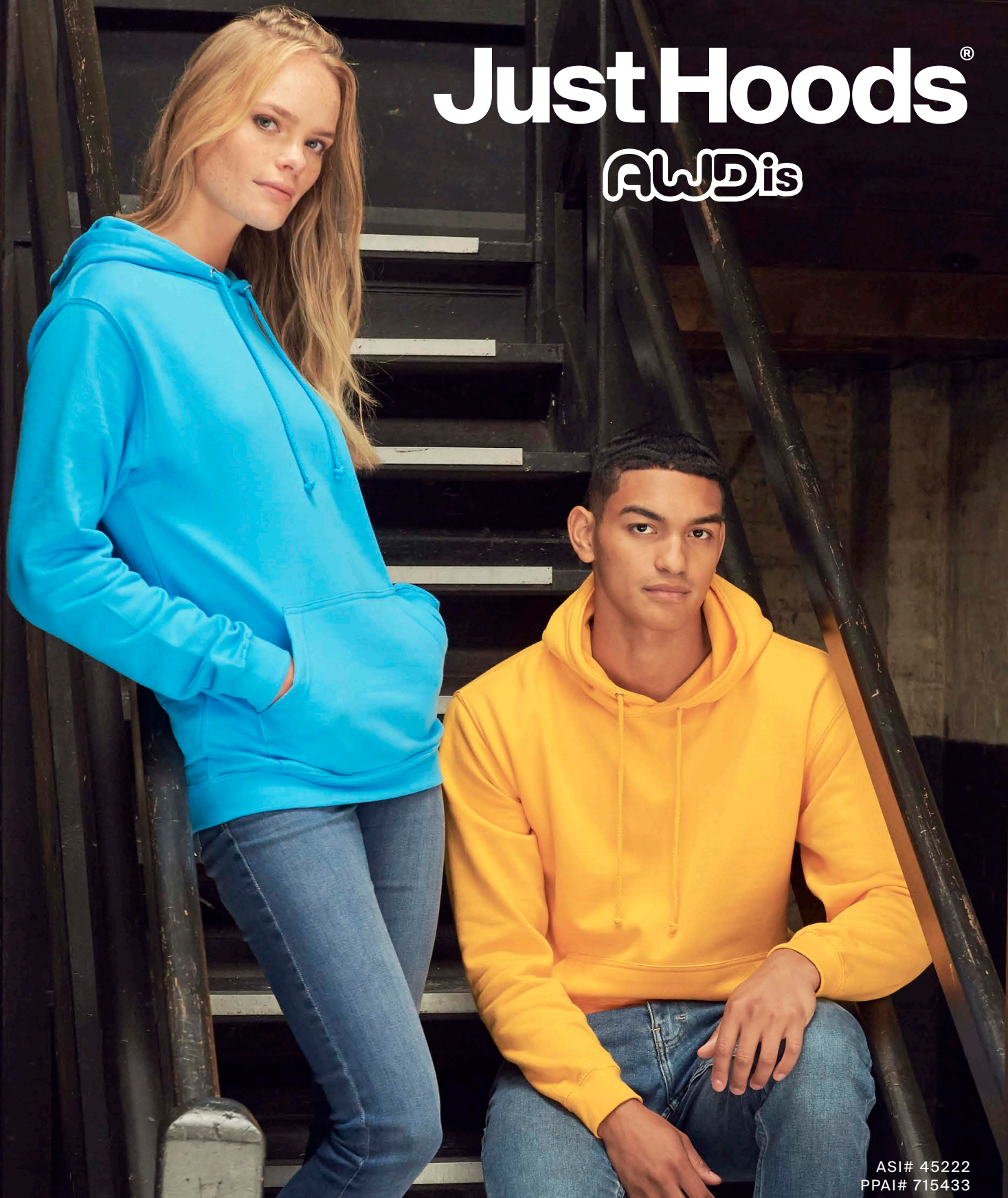
						
BURGUNDY HEATHER GREY	FIRE RED* HEATHER GREY	HOT PINK* HEATHER GREY	JET BLACK FIRE RED	JET BLACK HEATHER GREY	JET BLACK ORANGE CRUSH	
						
JET BLACK SUN YELLOW	JET BLACK* WHITE	KELLY GREEN HEATHER GREY	OXFORD NAVY* HEATHER GREY	OXFORD NAVY WHITE	PURPLE HEATHER GREY	ROYAL BLUE* HEATHER GREY

JHA042 URBAN LETTERMAN JACKET

	
CHARCOAL JET BLACK	JET BLACK JET BLACK

Just Hoods[®]

AWDis



ASI# 45222
PPAI# 715433

www.justhoodsusa.com



@justhoodsbyAWDisUS



@justhoodsusa



@justhoodsUS