

Just Hoods[®]

AWDis





Contents:

JHA001	College Hoodie NEW COLORS	page 5
JHY001	Youth College Hoodie NEW COLOR	page 7
JHA003	Varsity Contrast Hoodie	page 8
JHA009	Baseball Hoodie	page 9
JHA004	Electric Hoodie	page 10
JHY004	Youth College Hoodie	page 11
JHA011	Epic Print Hoodie	page 12
JHA014	Camo Hoodie	page 13
JHA016	Women's Cropped Hoodie	page 14
JHA035	Women's Cropped Sweat	page 15
JHA017	Surf Hoodie	page 16
JHA021	Cross Neck Hoodie NEW COLORS	page 17
JHA030	College Sweat NEW COLORS	page 18
JHY030	Youth College Sweat NEW STYLE	page 20
JHA043	Letterman Jacket	page 21
JHY043	Youth Letterman Jacket	page 22
JHA042	Urban Letterman Jacket	page 24
JHA046	Sophomore ¼ Zip Sweat NEW STYLE	page 25
JHA050	College Zoodie NEW COLORS	page 26
JHA074	Tapered Track Pant	page 28
JHA080	Campus Shorts NEW STYLE	page 29
	Size Guide	page 30
	PMS Guide	page 30
	Color Guides	page 31



Lavender

Dusty Green



Fire Red

Burgundy

Heather Grey

Steel Grey



Oxford Navy

Royal Blue

Purple

Airforce Blue

JHA001

COLLEGE HOODIE S-5XL

All colors available in S-3XL – available in up to 5XL on selected colors

Key Features

- 42 great colors
- Brushed inner fleece
- Double fabric hood
- Soft cotton faced fabric creates ideal printing surface

Specification

- 80% Ringspun Cotton / 20% Polyester
- 52% Ringspun Cotton / 48% Polyester (Charcoal)
- 75% Ringspun Cotton / 25% Polyester (Heather Grey)
- 70% Ringspun Cotton / 30% Polyester (Smoke Colors)

Fabric Weight

- 8.3 oz/280 gsm Midweight fabric

Case Quantity

24

NEW COLORS



Available in youth, pg.6



Jet Black

Purple

Complete
comfort



Fire Red



JHY001
YOUTH COLLEGE HOODIE XS-XL

Key Features

- Double fabric hood
- Twin needle stitching detail
- No drawcords

Specification

- 80% Ringspun Cotton / 20% Polyester
- 52% Ringspun Cotton / 48% Polyester (Charcoal)
- 75% Ringspun Cotton / 25% Polyester (Heather Grey)

Fabric Weight

- 8.3 oz/280 gsm Midweight fabric

Case Quantity

24

NEW COLOR

- Available in adults, pg.5



Bottle Green

Royal Blue



JHA003
VARSITY CONTRAST HOODIE S-3XL

- Key Features**
- 14 great colors
 - Twin needle stitching detail
 - Double fabric hood
 - Kangaroo pouch pocket
 - Contrasting hood and drawstring

- Specification**
- 80% Ringspun Cotton / 20% Polyester
 - 52% Ringspun Cotton / 48% Polyester (Charcoal)
 - 75% Ringspun Cotton / 25% Polyester (Heather Grey)

- Fabric Weight**
- 8.3 oz/280 gsm Midweight fabric

Case Quantity
24



JHA009
BASEBALL HOODIE S-3XL

- Key Features**
- Twin needle stitching detail
 - Contrast raglan sleeves and drawcords
 - Contrast double fabric hood
 - Simple tear out label makes it perfect for rebranding

- Specification**
- 80% Ringspun Cotton / 20% Polyester
 - 52% Ringspun Cotton / 48% Polyester (Charcoal)
 - 75% Ringspun Cotton / 25% Polyester (Heather Grey)

- Fabric Weight**
- 8.3 oz/280 gsm Midweight fabric

Case Quantity
24



Electric Orange

Electric Yellow



Dare to
be seen

Electric Yellow



JHA004
ELECTRIC HOODIE S-3XL

Key Features

- Vibrant eye catching colors
- Twin needle stitching detail
- Flat lace drawcords

Specification

- 85% Polyester / 15% Ringspun Cotton

Fabric Weight

- 8.3 oz/280 gsm Midweight fabric

Case Quantity

24



Available in youth, pg.11

JHY004
YOUTH COLLEGE HOODIE XS-XL

Key Features

- Vibrant eye-catching colors
- Twin needle stitching detail
- No drawcords

Specification

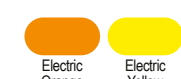
- 85% Polyester / 15% Ringspun Cotton

Fabric Weight

- 8.3 oz/280 gsm Midweight fabric

Case Quantity

24



Available in adult, pg.10



Jet Black



JHA011
EPIC PRINT HOODIE S-3XL

- Key Features**
- Twin needle stitching detail
 - Two panel double fabric hood
 - No pocket for maximum print surface area

- Specification**
- 80% Ringspun Cotton / 20% Polyester

- Fabric Weight**
- 8.3 oz/280 gsm Midweight fabric

- Case Quantity**
24



Jet Black



Green Camo

Grey Camo



JHA014
CAMO HOODIE S-3XL

- Key Features**
- Twin needle stitching detail
 - Classic all over camouflage print design
 - Double fabric hood

- Specification**
- 70% Ringspun Cotton / 30% Polyester

- Fabric Weight**
- 8.3 oz/280 gsm Midweight fabric

- Case Quantity**
24



Grey Camo Green Camo





Dusty Pink

Heather Grey

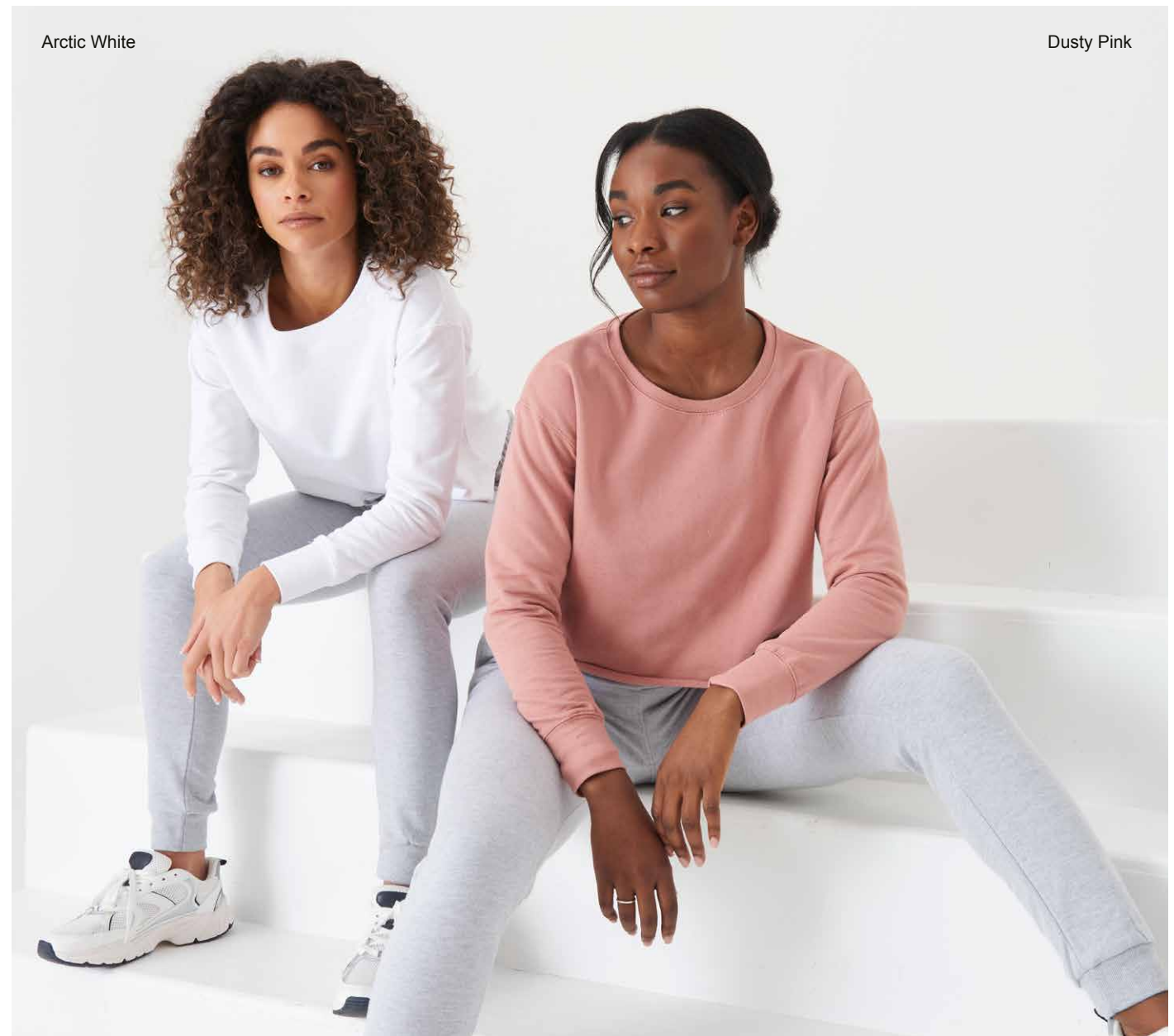
JHA016
WOMEN'S CROPPED HOODIE XS-XL

- Key Features**
- Women's relaxed fit
 - Cropped cut with drop shoulder design
 - Twin needle stitching detail
 - Raw edge hem with cover stitching

- Specification**
- 80% Ringspun Cotton / 20% Polyester
 - 75% Ringspun Cotton / 25% Polyester (Heather Grey)

- Fabric Weight**
- 8.3 oz/280 gsm Midweight fabric

Case Quantity
24



Arctic White

Dusty Pink

JHA035
WOMEN'S CROPPED SWEAT XS-XL

- Key Features**
- Women's relaxed fit
 - Crew neckline
 - Cropped cut with drop shoulder design
 - Raw edge hem with cover stitching

- Specification**
- 80% Ringspun Cotton / 20% Polyester
 - 75% Ringspun Cotton / 25% Polyester (Heather Grey)

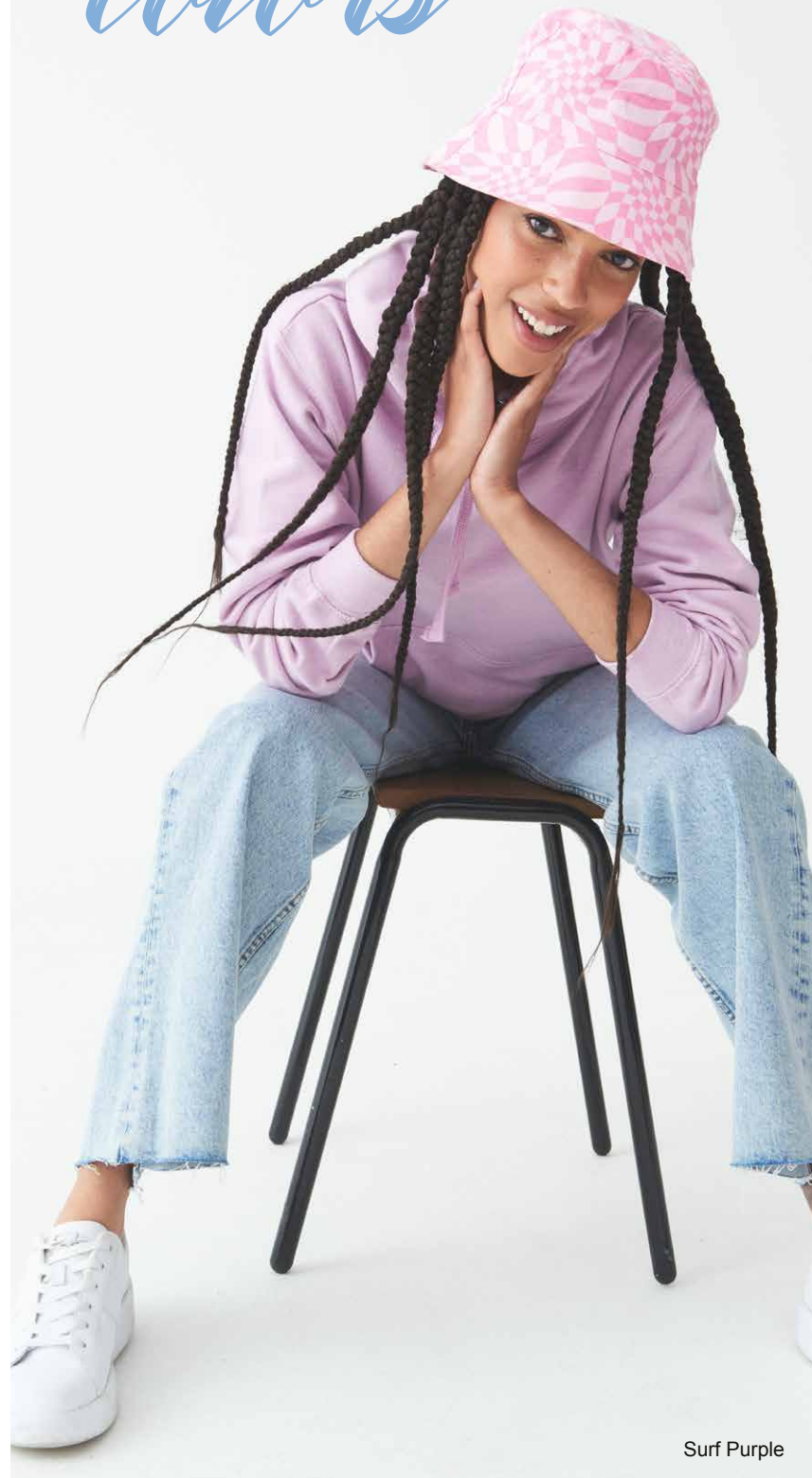
- Fabric Weight**
- 8.3 oz/280 gsm Midweight fabric

Case Quantity
24



Jet Black

Surf Colors



Surf Purple

Surf Blue Surf Ocean



Surf Yellow

Surf Pink



JHA017 SURF HOODIE S-3XL

Key Features

- Twin needle stitching detail
- Melange effect fabric
- Relaxed fit
- Double fabric hood

Specification

80% Ringspun Cotton / 20% Polyester

Fabric Weight

• 8.3 oz/280 gsm Midweight fabric

Case Quantity

24



JHA074 Tapered Track Pant pg.28
JHA080 Campus Shorts pg.29



Heather Grey

Baby Pink

Peppermint

JHA021 CROSS NECK HOODIE S-3XL

Key Features

- Heavyweight hoodie
- Cross over neck detail
- Twin needle stitching detail
- Three panel double fabric hood
- Thumb holes in the cuffs

Specification

- 70% Ringspun Cotton / 30% Polyester
- 65% Ringspun Cotton / 35% Polyester (Heather Grey)

Fabric Weight

• 9.8 oz/330 gsm Heavyweight fabric

Case Quantity

24

NEW COLOR



JHA074 Tapered Track Pant pg.28

Oxford Navy

Heather Grey





Bottle Green



Sun Yellow

Gold

Desert Sand

Oxford Navy



Nude

JHA030
COLLEGE SWEAT S-5XL

All colors available in S-3XL – available in up to 5XL on selected colors

Key Features

- 42 great colors
- Set in sleeves
- Stylish fit
- Brushed inner fleece
- Simple tear out label makes it perfect for rebranding

Specification

- 80% Ringspun Cotton / 20% Polyester
- 52% Ringspun Cotton / 48% Polyester (Charcoal)
- 75% Ringspun Cotton / 25% Polyester (Heather Grey)
- 70% Ringspun Cotton / 30% Polyester (Black Smoke)

Fabric Weight

- 8.3 oz/280 gsm Midweight fabric

Case Quantity

36

NEW COLORS



Available in youth, pg.20



Nude

Lavender

Baby Pink

Dusty Green



Bottle Green

Mustard

Olive Green

Fire Red



Playful
style

JHY030
YOUTH COLLEGE SWEAT XS-XL
NEW STYLE

- Key Features**
- 8 great colors
 - Set in sleeves
 - Stylish fit
 - Brushed inner fleece

- Specification**
- 80% Ringspun Cotton / 20% Polyester
 - 75% Ringspun Cotton / 25% Polyester (Heather Grey)

- Fabric Weight**
- 8.3 oz/280 gsm Midweight fabric

Case Quantity
36

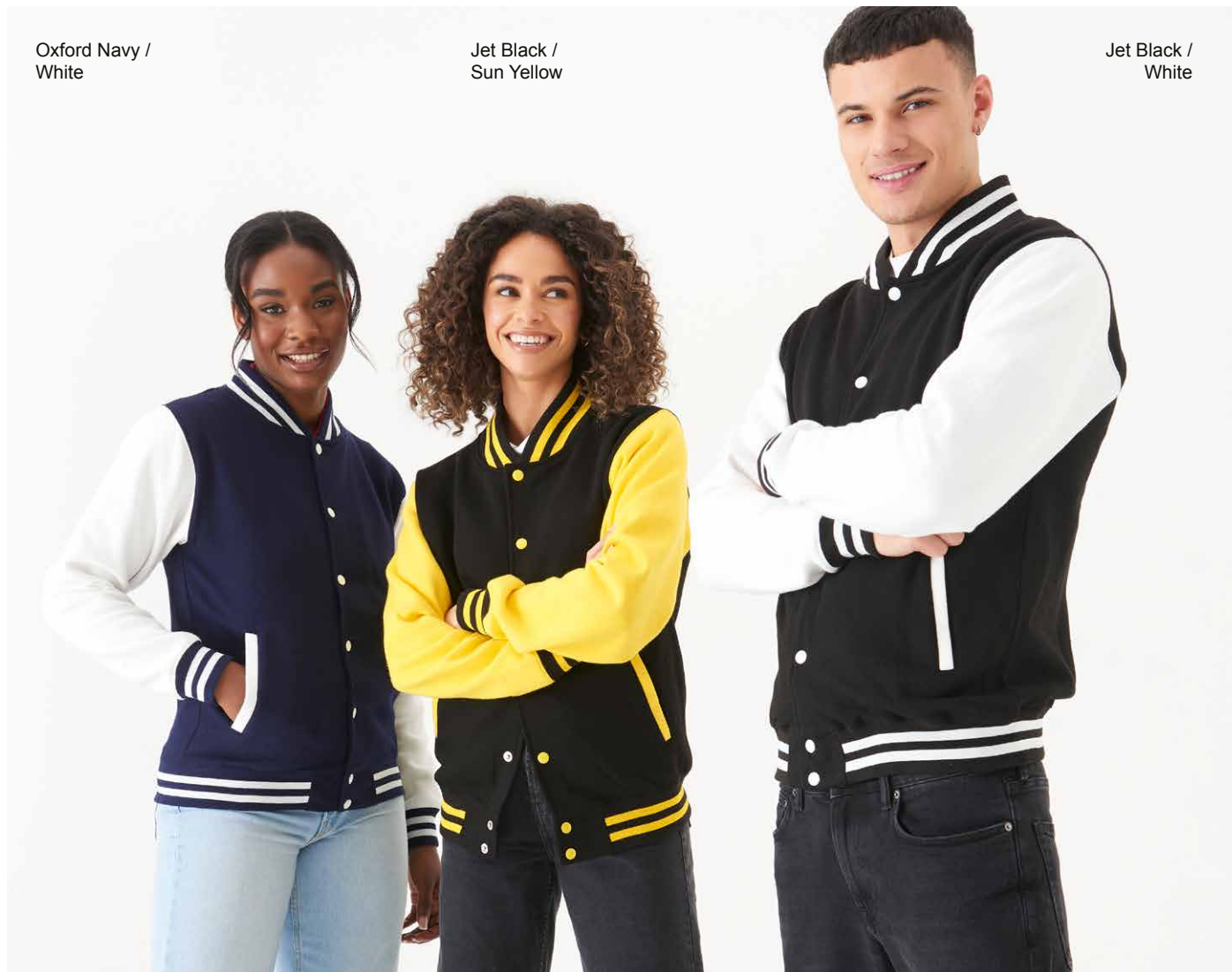


Jet Black



Bottle Green





Oxford Navy / White

Jet Black / Sun Yellow

Jet Black / White



Oxford Navy / Heather Grey

JHA043
LETTERMAN JACKET S-3XL

- Key Features**
- Welt contrast pockets
 - Taped back neck
 - Hanging loop at back neck
 - Simple tear out label makes it perfect for rebranding

- Specification**
- 70% Ringspun Cotton / 30% Polyester
 - 65% Ringspun Cotton / 35% Polyester (Heather Grey)

- Fabric Weight**
- 9.8 oz/330 gsm Heavyweight fabric

Case Quantity
24



Available in youth, pg.23



Burgundy / Heather Grey

Oxford Navy / White

JHY043
YOUTH LETTERMAN JACKET XS-XL

- Key Features**
- Welt contrast pockets
 - Taped back neck
 - Hanging loop at back neck

- Specification**
- 70% Ringspun Cotton / 30% Polyester
 - 65% Ringspun Cotton / 35% Polyester (Heather Grey)

- Fabric Weight**
- 9.8 oz/330 gsm Heavyweight fabric

Case Quantity
24



Available in adult, pg.22





Charcoal /
Jet Black

JHA042
URBAN LETTERMAN JACKET
S-3XL

Key Features

- Knitted collar, cuffs and waistband with stripe details
- Faux Leather sleeves
- Welt pockets with faux leather trim
- Hanging loop at back neck
- Taped back neck

Specification

- 70% Ringspun Cotton / 30% Polyester (Body)
- 100% PU Leather (Sleeves)

Fabric Weight

- 9.8oz/330 gsm (Body)
- 7.8oz (Sleeves)

Case Quantity

24



Charcoal
Jet Black



Oxford
Navy

Jet Black

Charcoal

JHA046
SOPHOMORE ¼ ZIP SWEAT
S-3XL
NEW STYLE

Key Features

- ¼ Zip neck
- Metal YKK zipper and puller
- Soft cotton faced fabric creates ideal printing surface

Specification

- Specification
- 80% Ringspun Cotton / 20% Polyester
 - 52% Ringspun Cotton / 48% Polyester (Charcoal)

Fabric Weight

- 8.3 oz/280 gsm Midweight fabric

Case Quantity

24



Charcoal Jet Black Oxford Navy





JHA050
COLLEGE ZOODIE S-3XL

Key Features

- Self-fabric covered main YKK zip
- Twin needle stitching detail
- Double fabric hood

Specification

- 80% Ringspun Cotton / 20% Polyester
- 52% Ringspun Cotton / 48% Polyester (Charcoal)
- 75% Ringspun Cotton / 25% Polyester (Heather Grey)

Fabric Weight

- 8.3 oz/280 gsm Midweight fabric

Case Quantity

24

NEW COLOR



JHA074 Tapered Track Pant pg.28





Heather Grey

style is
your
voice

JHA074
TAPERED TRACK PANT S-3XL

- Key Features**
- Modern tapered slim fit
 - Front pockets
 - Elasticated waistband with outer drawcords

- Specification**
- 80% Ringspun Cotton / 20% Polyester
 - 75% Ringspun Cotton / 25% Polyester (Heather Grey)

- Fabric Weight**
- 8.3 oz/280 gsm Midweight fabric

Case Quantity
24



Heather Grey



Jet Black



Jet Black

JHA009
Baseball
Hoodie
Page 9



Heather Grey

JHA080
CAMPUS SHORTS S-3XL
NEW STYLE

- Key Features**
- Heavyweight shorts
 - Side pockets
 - Single back patch pocket

- Specification**
- 70% Ringspun Cotton / 30% Polyester
 - 65% Ringspun Cotton / 35% Polyester (Heather Grey)

- Fabric Weight**
- 9.8 oz/330 gsm Heavyweight fabric

Case Quantity
24





www.justhoodsusa.com

f @justhoodsbyawdisUS i @justhoodsusa t @justhoodsus